

## Time Slot Gävle

### A queuing system for jetty 1 and jetty 27 in Port of Gävle

A mandatory queuing system applies in Port of Gävle for tankers calling at jetty 27 (from February 1<sup>st</sup> 2023) and jetty 1 (from February 5<sup>th</sup> 2024). Rules for the queuing system are introduced in the Port Rules for Port of Gävle and in the operating regulations for the energy terminals.

### Time Slot Gävle

The queuing system is digital where the vessel applies for a time slot by a web form no earlier than 72 hours (for jetty 1) and 36 hours (for jetty 27) before arrival to the outer port area.

The vessel receives a suggested RTA (Recommended Time of Arrival) based on the vessel's stated ETA to the outer harbor area and any queue to the current berth.

The purpose of the queuing system is for vessels to be able to slow steam and thereby reduce climate impact and reduce fuel costs. At the same time, terminals and port actors get a better planning horizon.

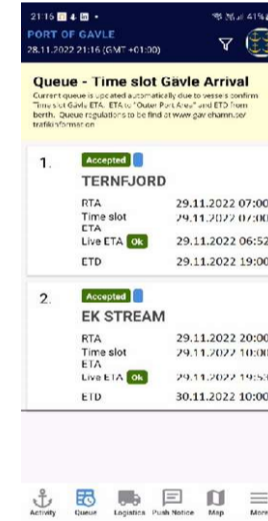
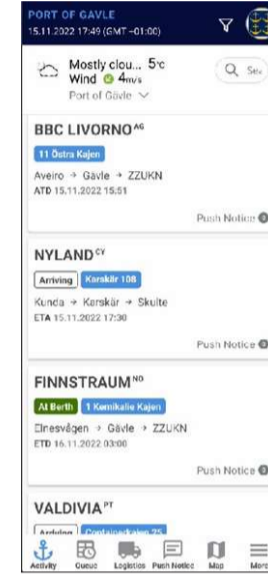
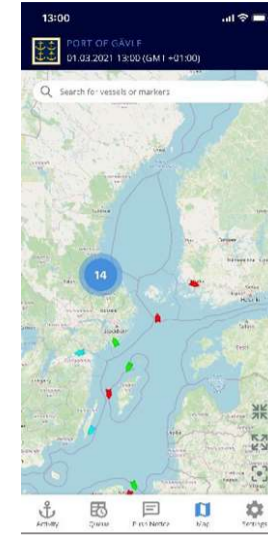
Current queue is available in the app Port Activity App™ under the tab "Queue" and on the website [www.portactivity.se](http://www.portactivity.se).

Port of Gävle, Gävle Hamn AB, always has the right to change the current queuing order according to the Port Rules.

### General conditions in brief

- A time slot can be applied no earlier than 72 hours (for jetty 1) and 36 hours (for jetty 27) before arrival in the outer port area. The application can be made earlier but is only activated 72 hours (for jetty 1) or 36 hours (for jetty 27) before arrival.
- The time slot is maintained for up to 3 hours of delay. The vessel must then remove the current time slot and apply again for a new time slot.
- The berth laytime must be immediately adjusted if it becomes known to the vessel that the estimated berth laytime has changed.
- The vessel's ETD must be updated at the quay and in cooperation with the terminal.
- If there is an abnormal event or major delay Port of Gävle must always be notified immediately.
- If there is a change in queue, vessels may receive a new RTA. This new RTA must always be confirmed by the vessel.

See on page 2 how the application for a time slot is made.





## Time Slot Gävle

### How to apply for a time slot?

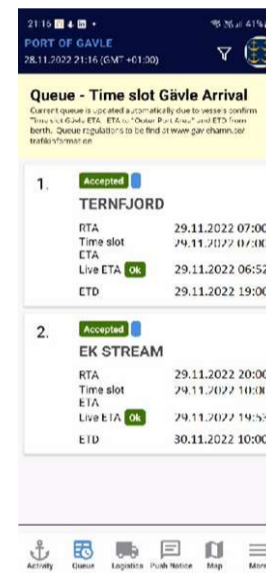
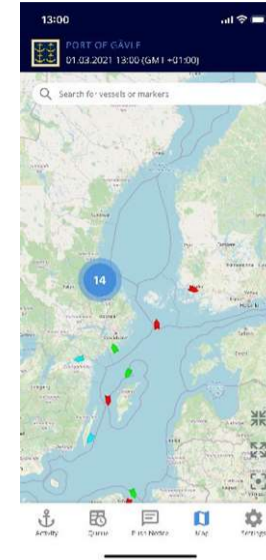
Vessel or its representative applies for a time slot.  
The application for a time slot must be made before arrival at Port of Gävles outer port area according to the instructions below. The queuing system only applies to jetty 1 and jetty 27.  
*On page 3, the outer port area is stated.*

#### Instruction

1. Go to the web page: <https://timeslot.portactivity.se/gavle>  
*(verification code can be obtained from the Port Traffic Office)*
2. Enter facts about the vessel, ETA to the outer port area and berth laytime. *The vessel's IMO-number determines which vessel gets the time slot.*  
*The outer port area is shown on page 3 and is not the same as e.g. pilot station.*
3. A reply email with a link containing an RTA is sent immediately.  
The jetty is now reserved for the vessel. The reservation remains for 12 hours.  
More than one recipient can receive e-mails with same link e.g. vessel and ship agent.
4. Vessel or ship agent confirms by the link in the e-mail that the RTA has been received. The queue position changes from status reserved to confirmed.
5. Vessel or the ship agent can at any time during the sea voyage, by the link in the e-mail, update the berth laytime to optimize the entire queue. The vessel or ship agent can also adjust the ETA +/- 30 minutes.
6. Current queue is available in the app Port Activity App™ under the tab "Queue" and on the website [www.portactivity.se](http://www.portactivity.se)  
The app can be downloaded from App Store or Google Play. Search for "Port Activity Gävle".
7. At the jetty, the vessel must enter the ETD in cooperation with the terminal. This can only be done in the app or on the website.  
It is mandatory for the Loading master to ensure that the ETD is updated during the port call.

Please contact Port of Gävle for further information.

**Port Traffic Office**, phone no. +46 26 17 88 66,  
E-mail: [trafik@gavlehamn.se](mailto:trafik@gavlehamn.se)  
Webpage: [www.gavlehamn.se](http://www.gavlehamn.se)

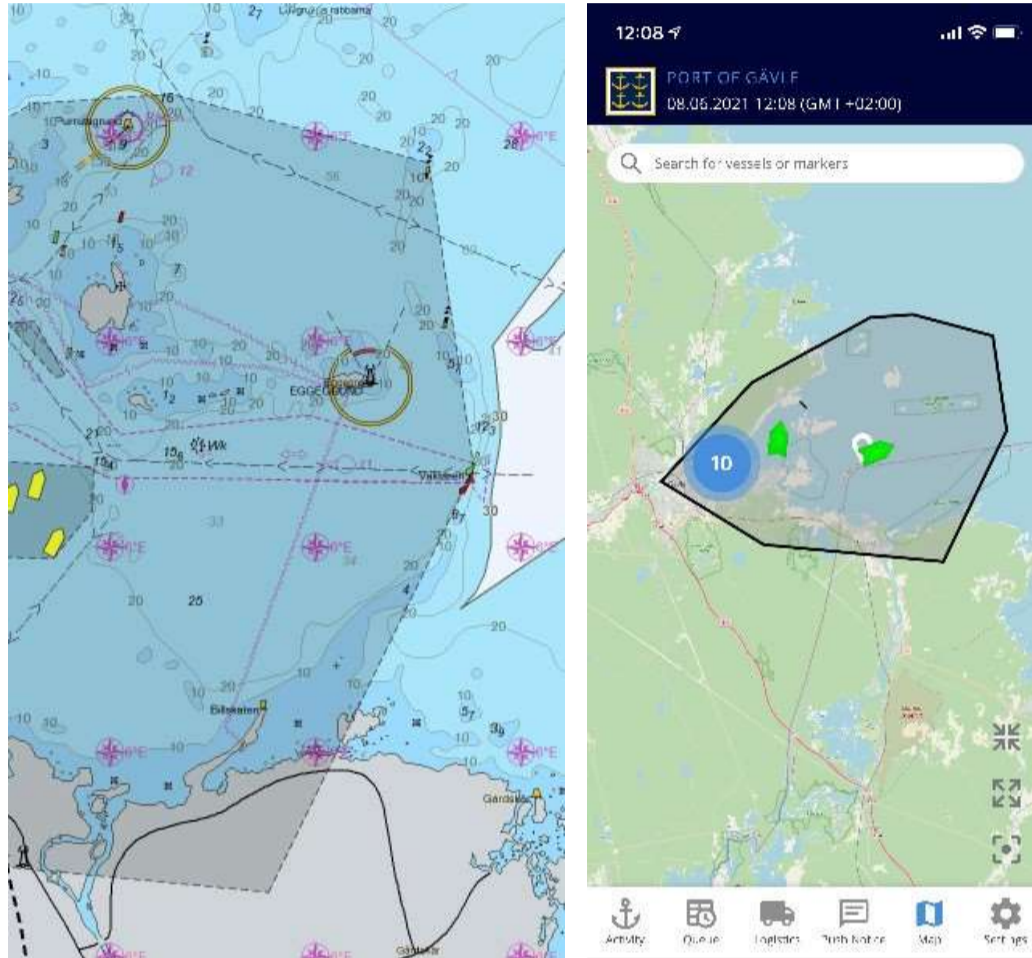




## Time Slot Gävle Port of Gävle's Outer Port Area

Port of Gävle has defined an outer area to make it easier for vessels to enter as accurate an ETA as possible

Accompanying the application for a time slot in the queuing system Time slot Gävle, an ETA to the outer port area must be started according to the images below.



Please contact Port of Gävle for further information.

**Port Traffic Office**, phone no. +46 26 17 88 66,  
E-mail: trafik@gavlehamn.se  
Webpage [www.gavlehamn.se](http://www.gavlehamn.se)