

Energy Optimized Port Cluster 2030

Program 2020 – 2030 (prestudy Feb-Sep 2020)

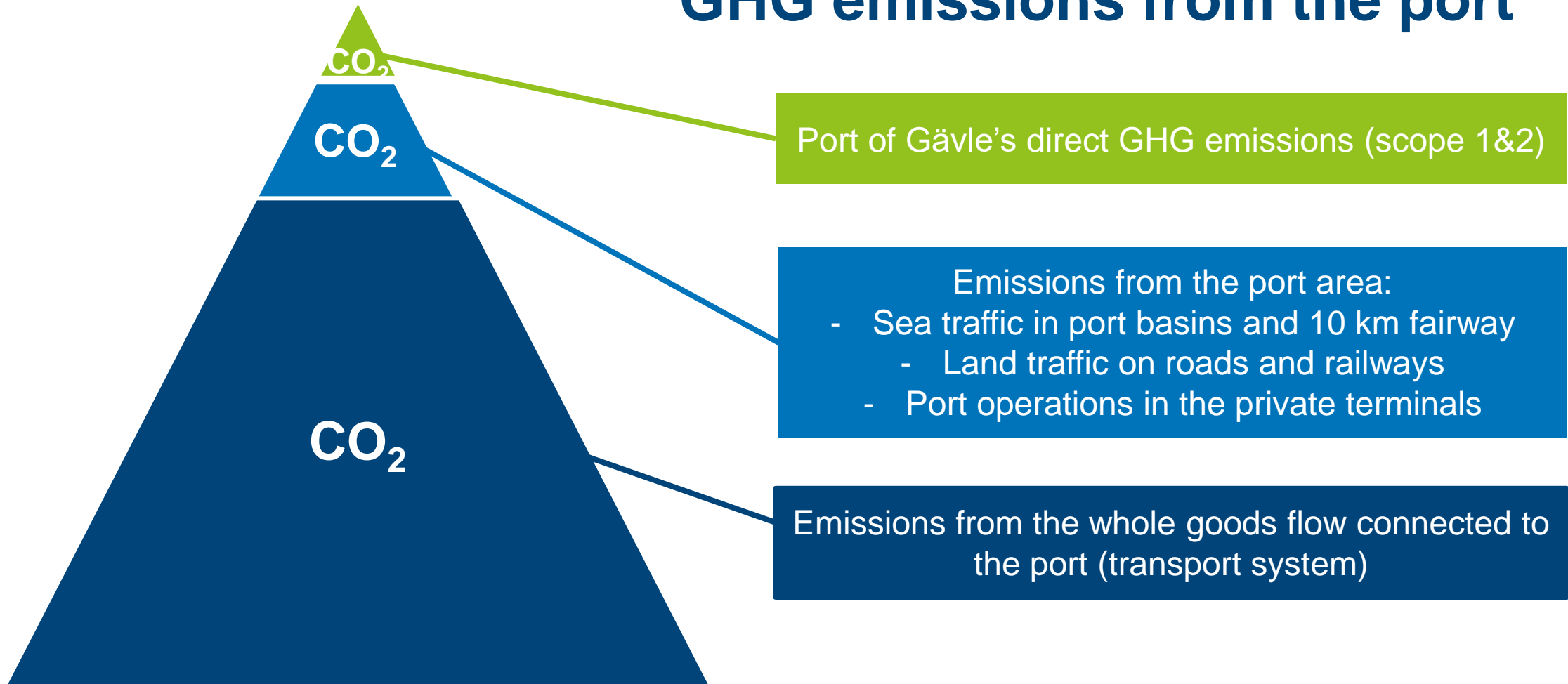
Program leader: Linda Astner

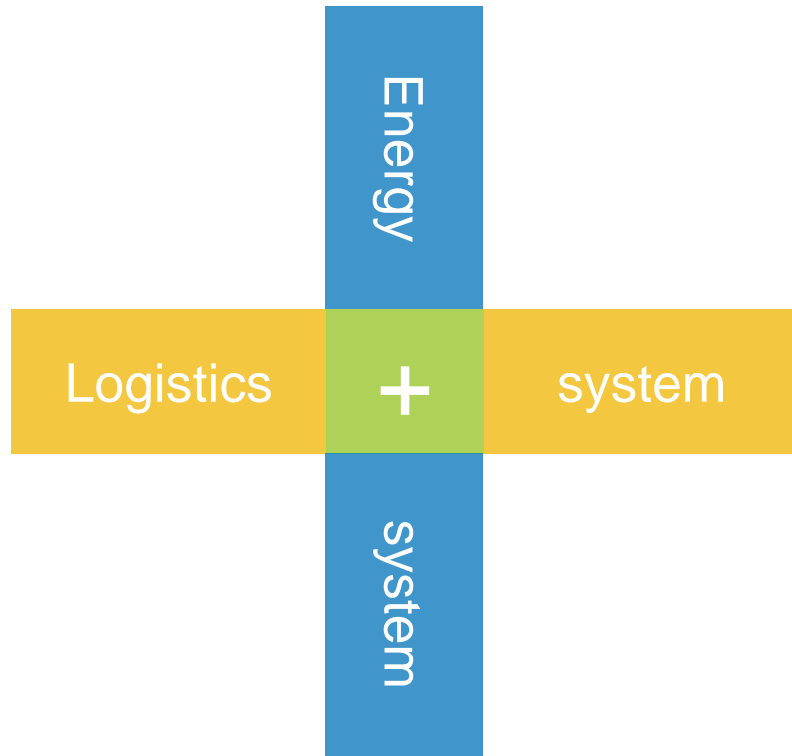
Coordinator cluster actors: Jennie Johansson



Gävle Hamn

GHG emissions from the port





Gävle Hamn



Main Program Goals

- The port cluster as a whole should meet the **CO₂ reduction** and **energy efficiency** requirements from both national and regional level, in line with the Paris agreement/1,5 degrees target. (This means -80 % emissions in 2030 within the geographical port area and fairway.)
- The program should contribute to **green transition of the larger transport systemet** (beyond the limits of the port area and fairway).
- The program should aim at developing the port as an **"energy node"**.



Gävle Hamn



Gävle Port Cluster

A network of actors (private and public organisations/companies) that...have a direct and shared interest in Gävle port as a node, due to the port being a vital part of the actor's own operations and/or vital part of the actor's own, or a customer's or supplier's, distribution (import/export)



Gävle Hamn

Energy Optimized Port Cluster 2030 – Tools

- Four focus areas with underlying projects for Gävle Hamn AB (Port Authority)
 1. Secure physical infrastructure
 2. Develop the port as a hub for renewable energy
 3. Develop efficient port processes
 4. Port transformation
- Coordination of the port cluster

Continuous dialogue with port cluster actors for coordination of TARGET IMAGE and ROAD MAPS for 2030, where the actors are invited to share their initiatives and deliveries towards the main goals in joint road maps 3 t/yr
- Follow-up towards the program goals



Focus areas for Gävle Port Authority

1. Secure physical infrastructure

- Capacity for electrification
- Shoreside and landside power supply
- Green fuels for trucks, trains and vessels
- Infra adjustments for larger and heavier carriers

2. Develop the port as a hub for renewable energy

- Smart energy systems to save and reuse energy
- Energy production
- Energy storage
- The port as a hydrogen hub

3. Develop efficient port processes

- Digital tools for information sharing
- Port traffic management
- Develop port regulations and agreements
- Nudging with port tariffs

4. Port transformation...

- Focus and strategy for tomorrow's logistics hub
- Governance and KPI's
- Future products in the Energy Port
- CCUS in Middle Sweden



Gemensam MÅLBILD 2030

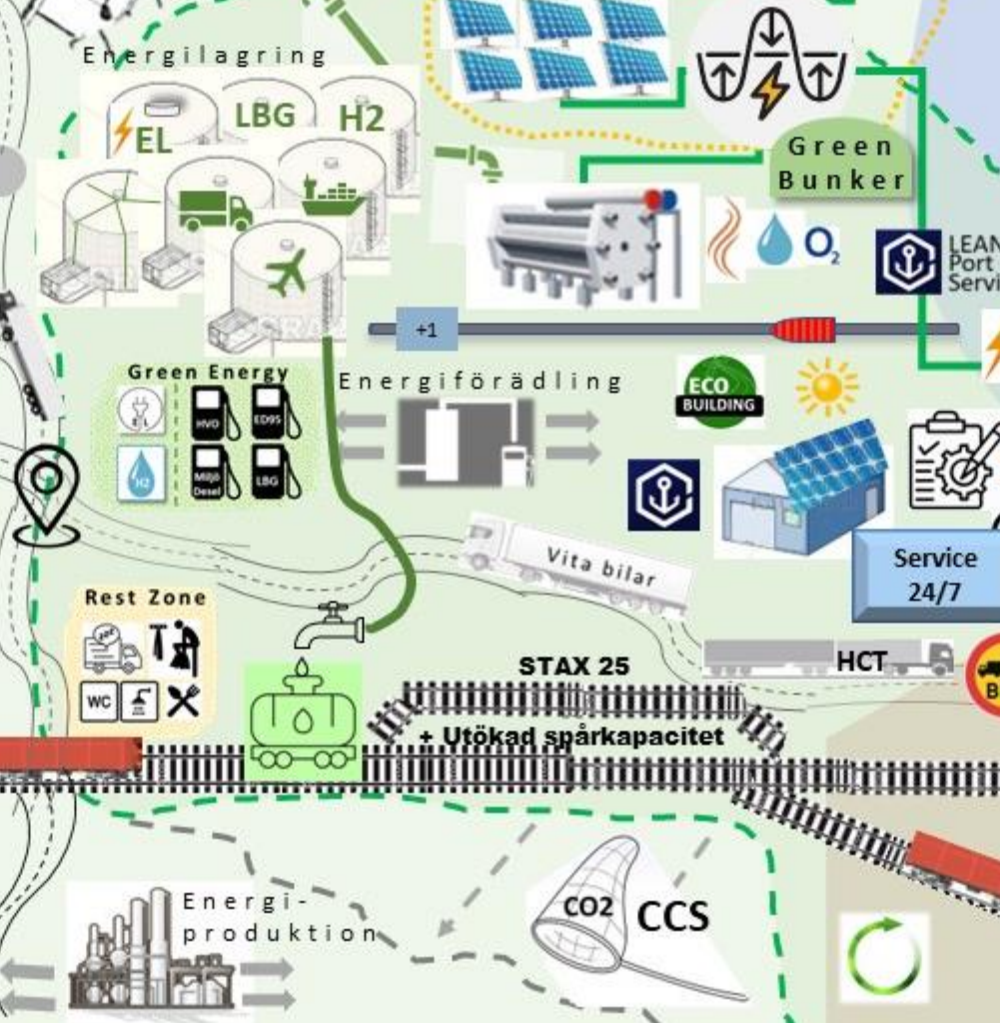


Version 2022-11-04

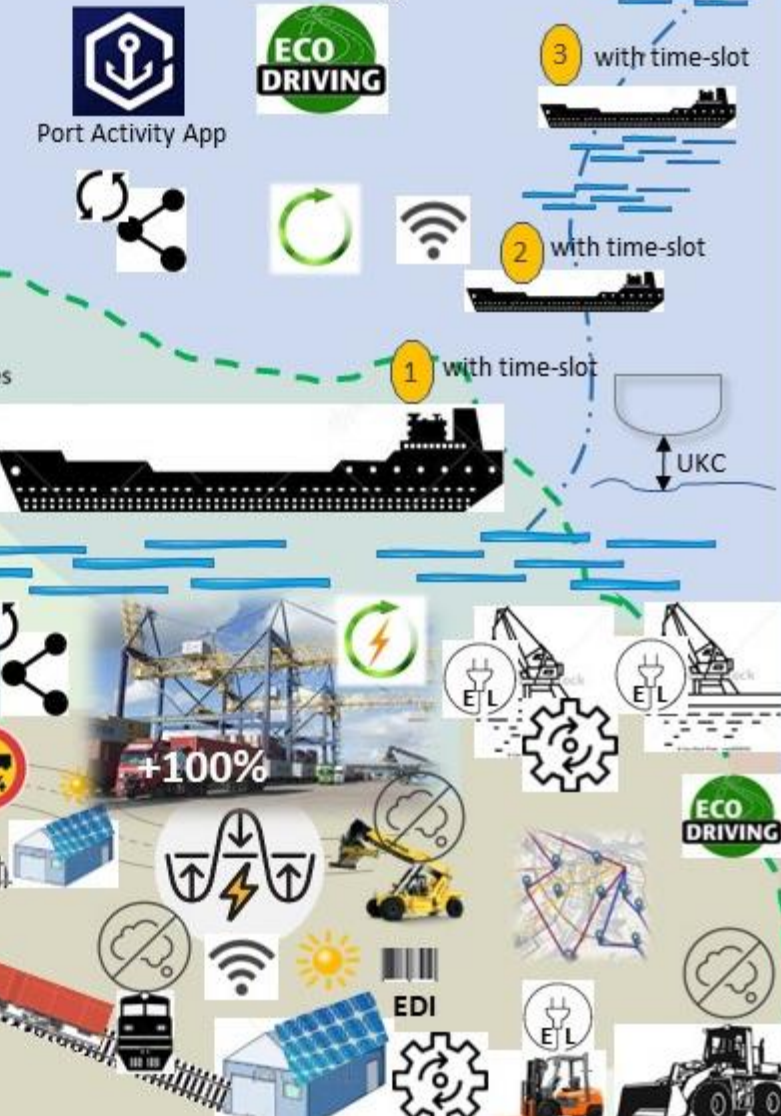
Industrinoder

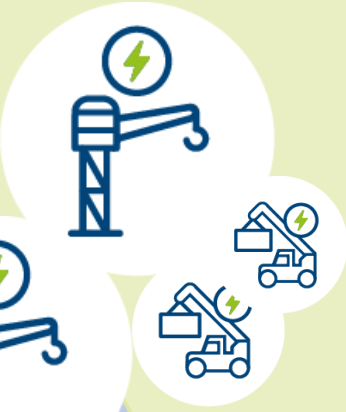
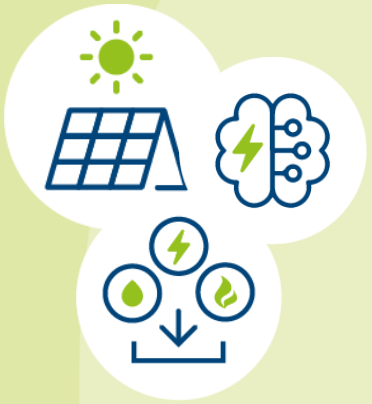
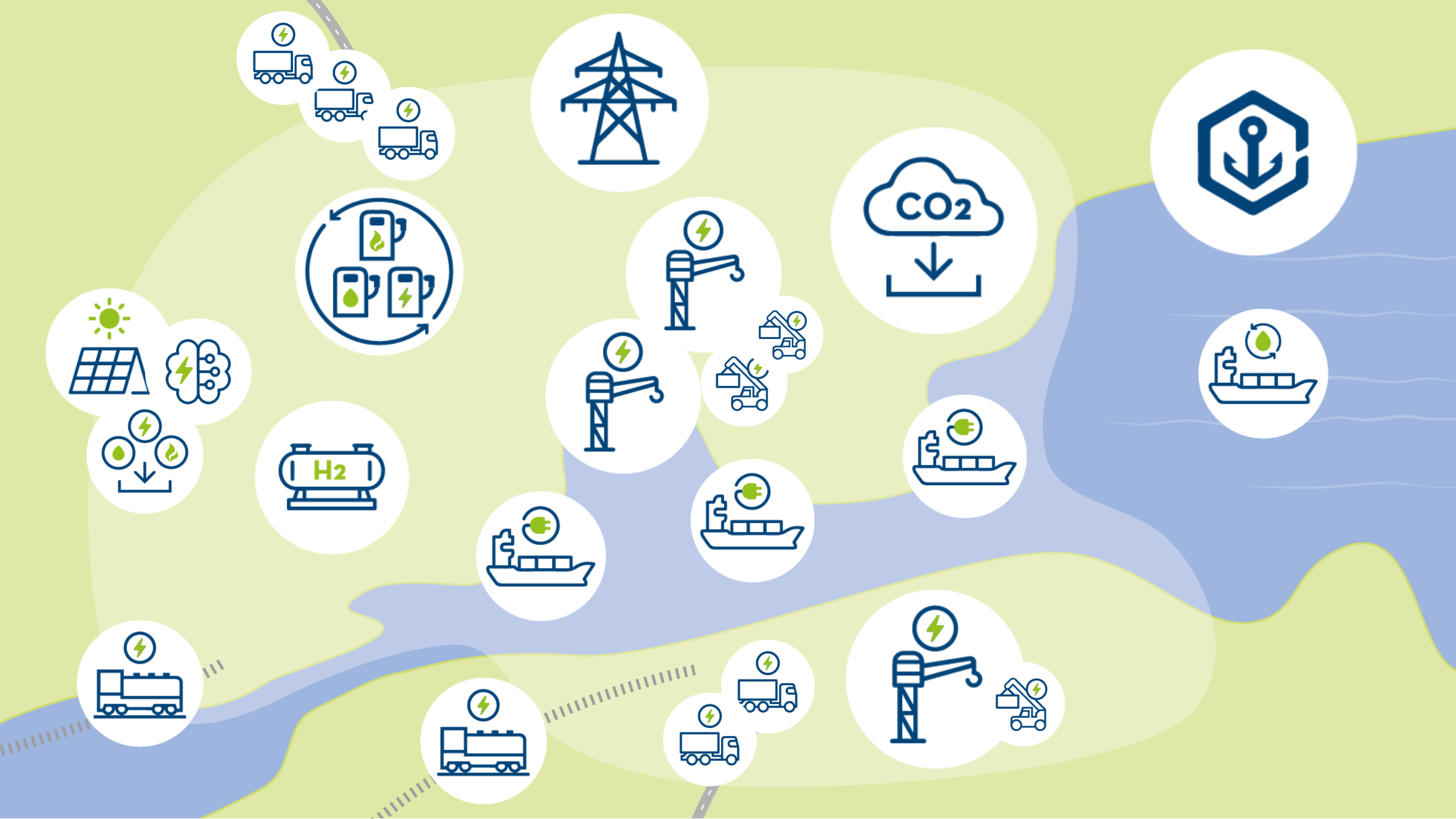


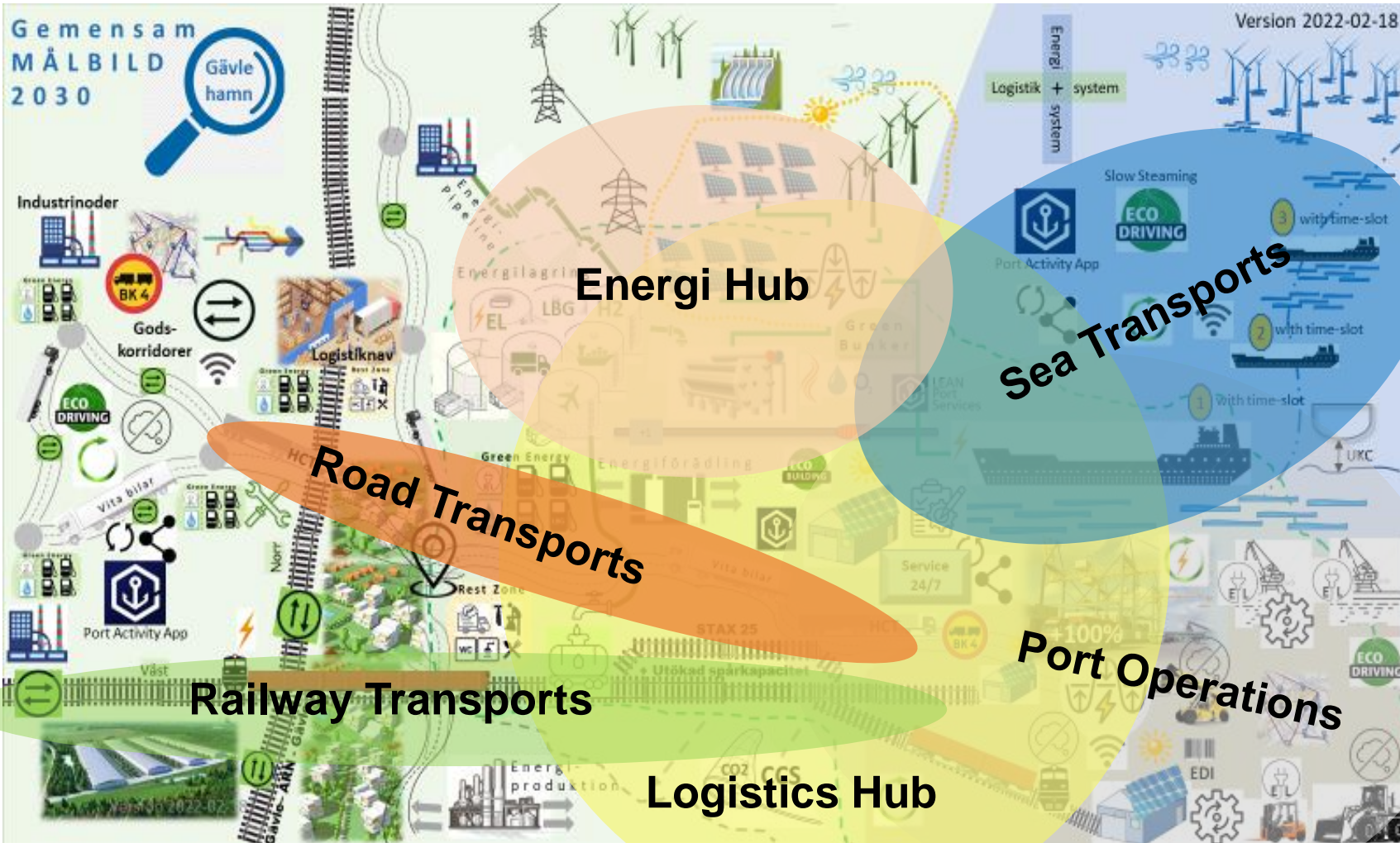
ETAPP 2 Fredriksskans Industriområde



Energi + system
Logistik + system







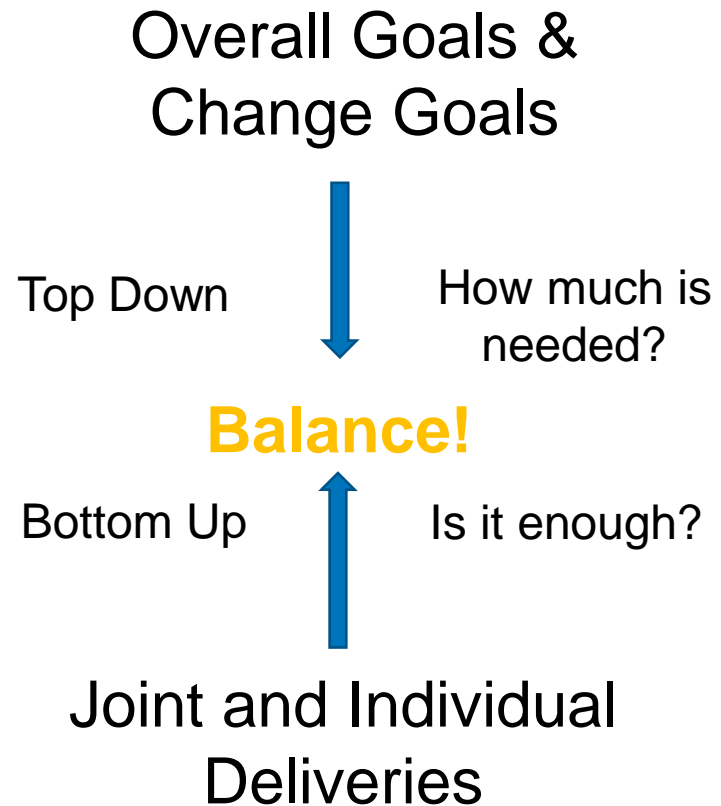
Processes

Program Goals

Main program goals and "transition targets" per process



Follow-up towards the program goals



- | Synchronizing **Road Maps** for the different **processes** and **change goals**
- | Mobilizing and organizing joint and individual deliveries.







THANKS!



Gävle Hamn