

# Port Regulations for PORT OF GÄVLE

*Adopted on October 27th, 2003, and applicable as of November 1st, 2003*

The activities in Port of Gävle are run by Gävle Hamn AB [the Port of Gävle], which is owned by the municipality of Gävle. Port activities are regulated by:

- The Port Regulations for Gävle Hamn AB, hereinafter called the Port of Gävle, (Port Regulations),
- The Port Rules for activities conducted in the Port of Gävle (Port Rules) and
- Tariffs and Prescripts for Port of Gävle (Tariffs/Prescripts).

The Port Regulations, Port Rules and the Tariffs/Prescripts are available upon request.

They can be obtained via the Port of Gävle's website ([www.gavle-port.se](http://www.gavle-port.se)), by ship agents and forwarding agents operating in the Gävle area or by Yilport Gävle.

The municipality of Gävle stipulates, supported by 1 § of the Ordinance (1993:1632) with the authority for municipalities and county administrative boards to notify local regulations in accordance with the Order Act (1993:1617), that for Port of Gävle, the following regulations shall apply.

## **Initial regulations**

### **1 §**

The fundamental regulations on public order and security in public places contained in Chapter 3 of the Order Act apply in the area of the port.

The Port Regulations and the Port rules contains the additional rules and regulations regarding order and security, needed with the respect to the activities carried out in the port.

For the part of the port area that is public place, the municipality's general regulations also apply.

### **2 §**

This Port Regulations applies in water and on land within the port area that has been marked out on the, to this Port Regulations, attached map.

### **3 §**

Persons staying in the port area are obliged to follow instructions from representatives of Port of Gävle. The notification obligations prescribed in the Port Regulations, Port Rules and Tariffs/Prescripts shall be made to the Managing Director of Port of Gävle or to the person or persons put by the Managing Director, in the Managing Directors place.

### **4 §**

In these regulations, vessels are understood to mean any objects used for transport on water or all other objects that can be moved on or in water.



### **Activities in the port**

#### **5 §**

The port area is owned and managed by the Port of Gävle.

Permission from the Port of Gävle is required for activities in the port area.

### **Traffic regulations**

#### **6 §**

Vessels shall be maneuvered and moored within the port area so that danger or obstacles do not arise for other vessel traffic. Furthermore, vessels must be maneuvered and moored so that persons, goods, other vessels and facilities are not damaged or exposed to danger.

The master of the vessel must observe caution when passing places where work is in progress in water.

#### **7 §**

Goods within the port area shall be handled in a way so that persons, goods, vessels and facilities do not get damaged or are exposed to danger.

#### **8 §**

Vehicles within the port area must be driven in a way so that persons, goods, vessels and facilities do not get damaged or are exposed to danger.

### **Port rules, tariffs and regulations**

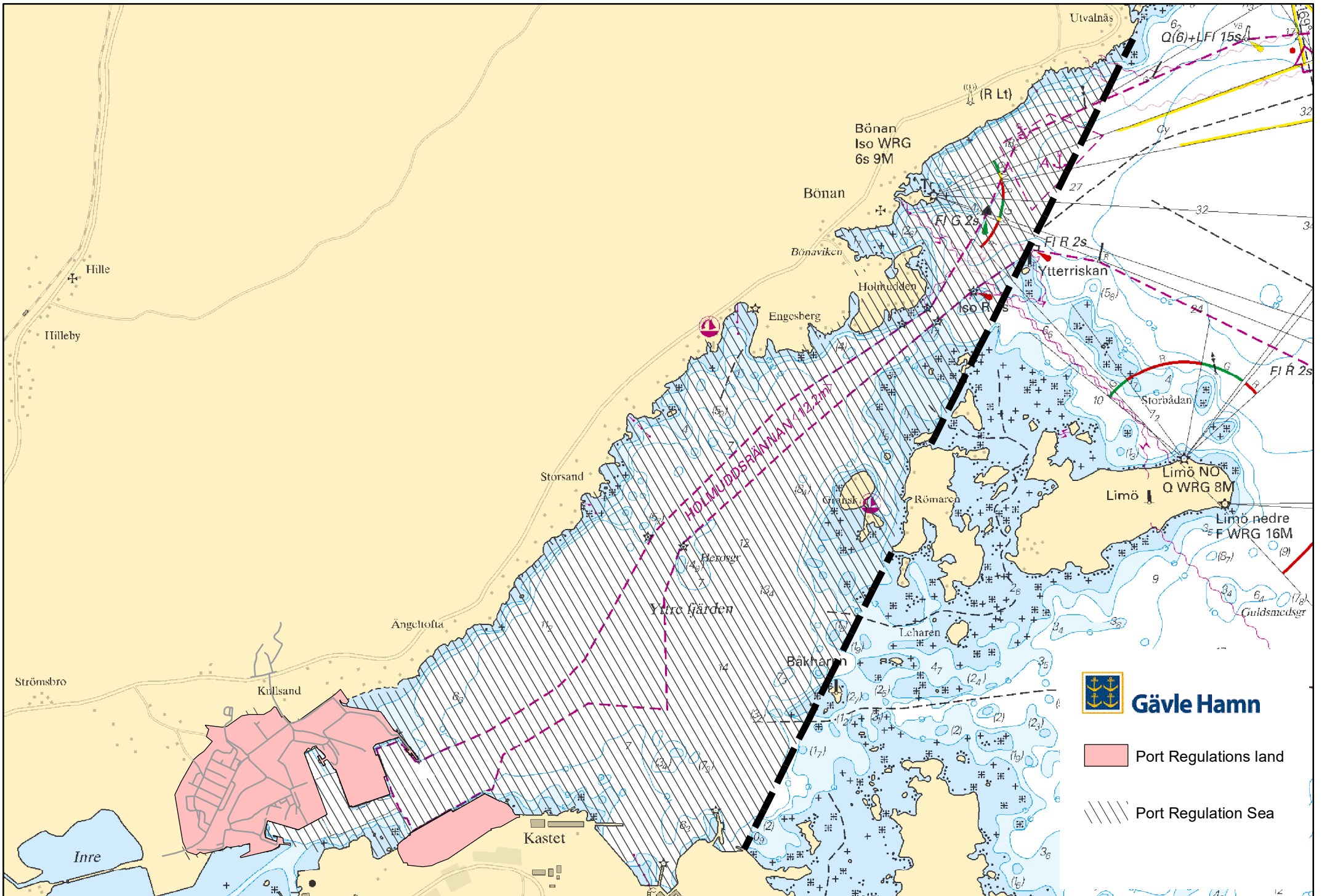
#### **9 §**

The Port of Gävle shall establish traffic regulations and other rules and regulations regarding the activities in the port. The Port of Gävle shall also determine tariffs and regulations.

### **Liability rules**

#### **10 §**

Anyone who intentionally or through negligence violates 3 and 6-8 §§ can be sentenced to monetary fines according to Chapter 3., 22 § second paragraph of the Order Act. The Order Act also contains regulations on injunctions and forfeiture.



**Gävle Hamn**



Port Regulations land



Port Regulation Sea